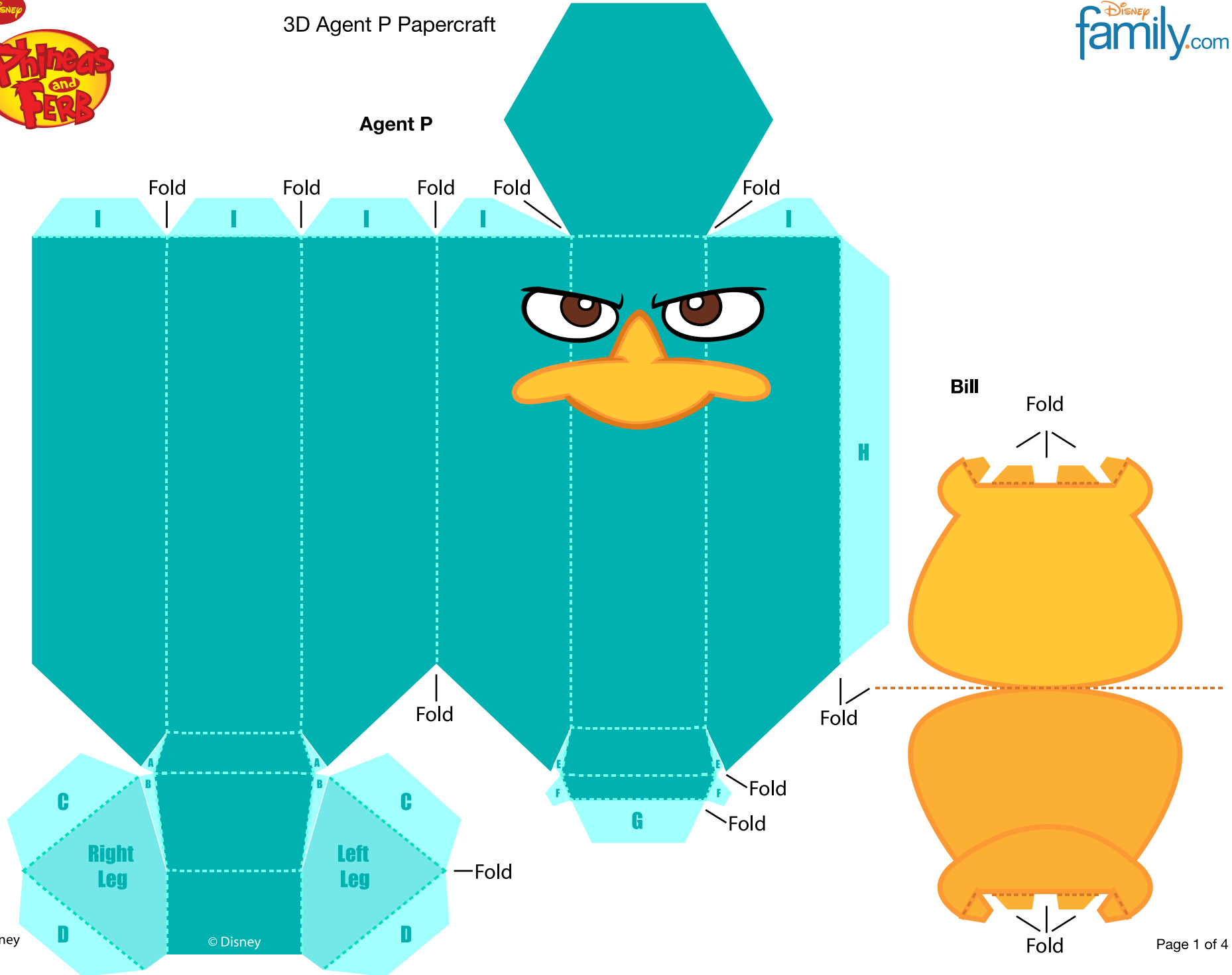




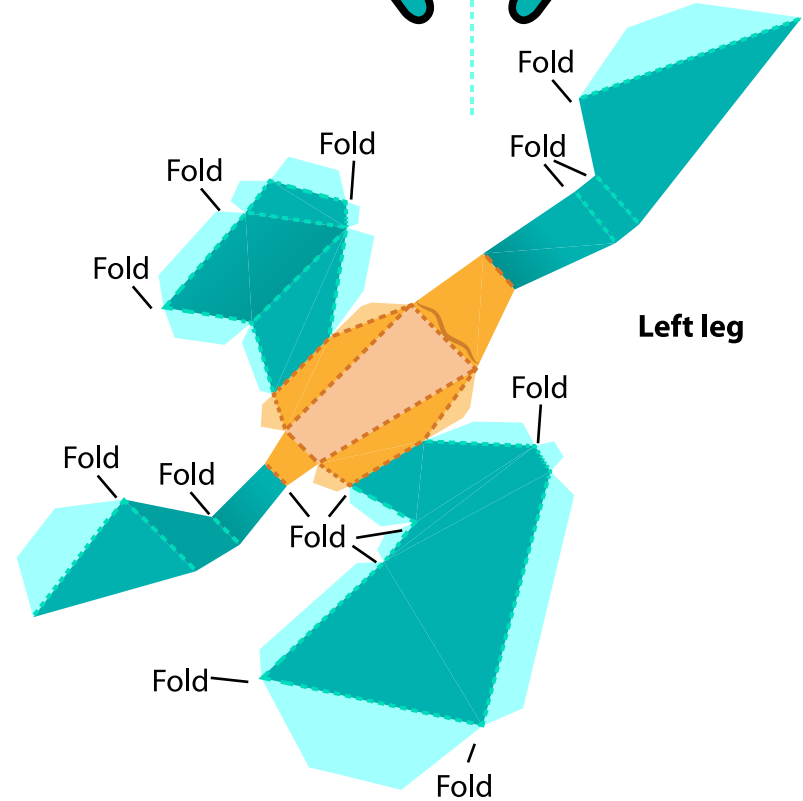
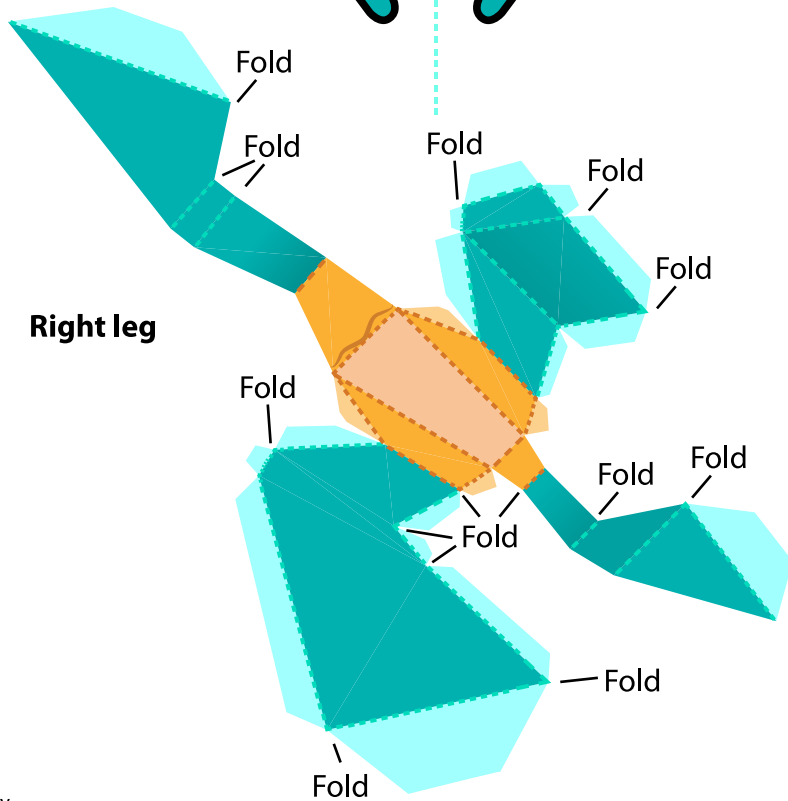
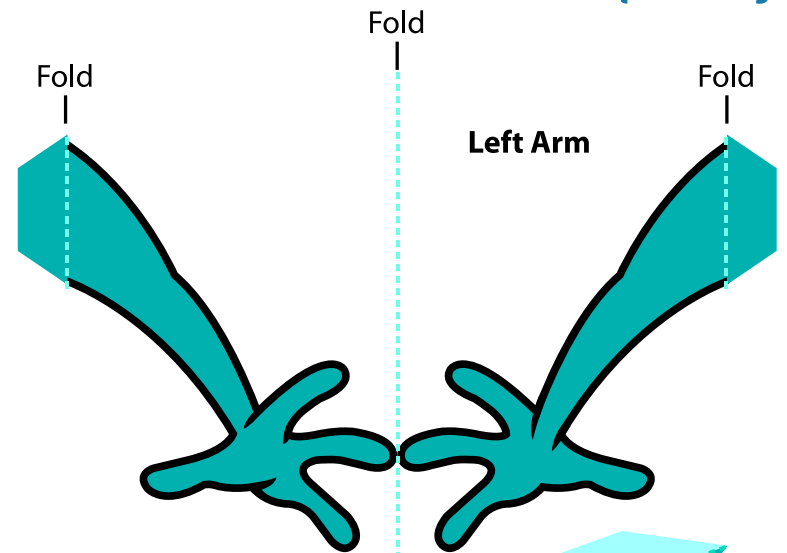
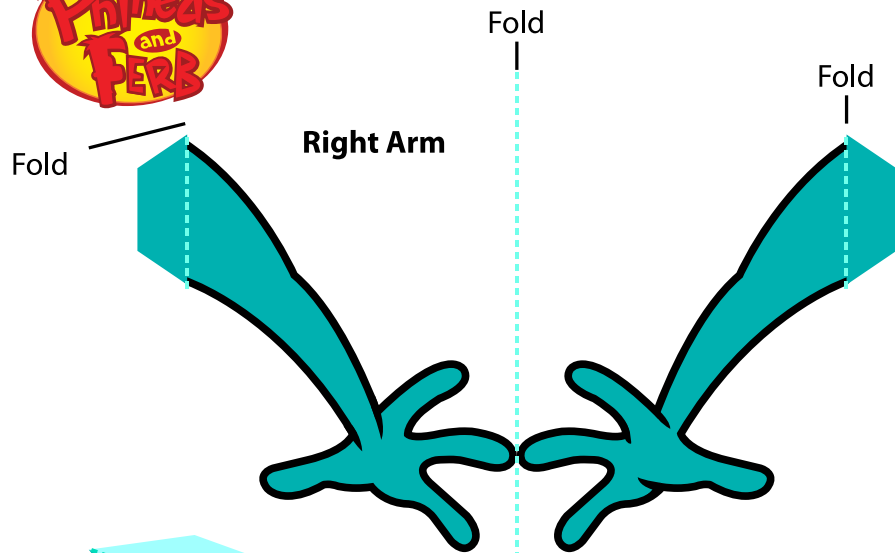
3D Agent P Papercraft

Agent P



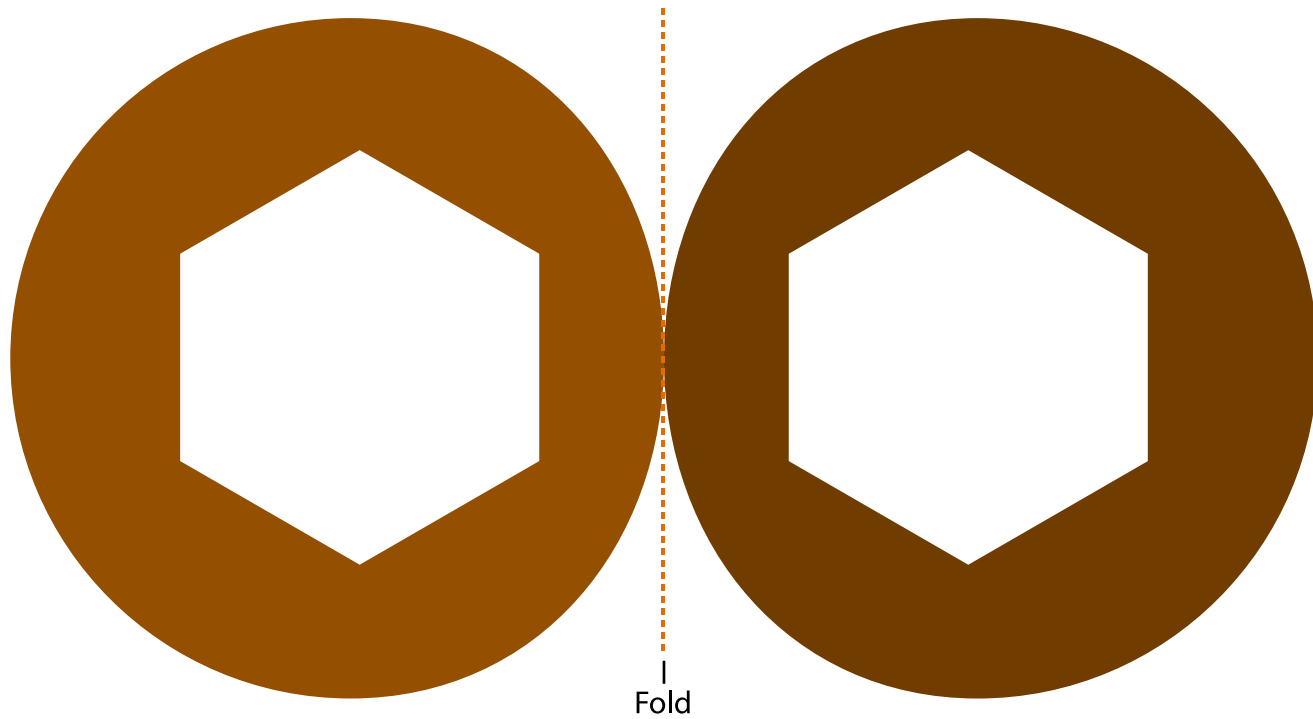
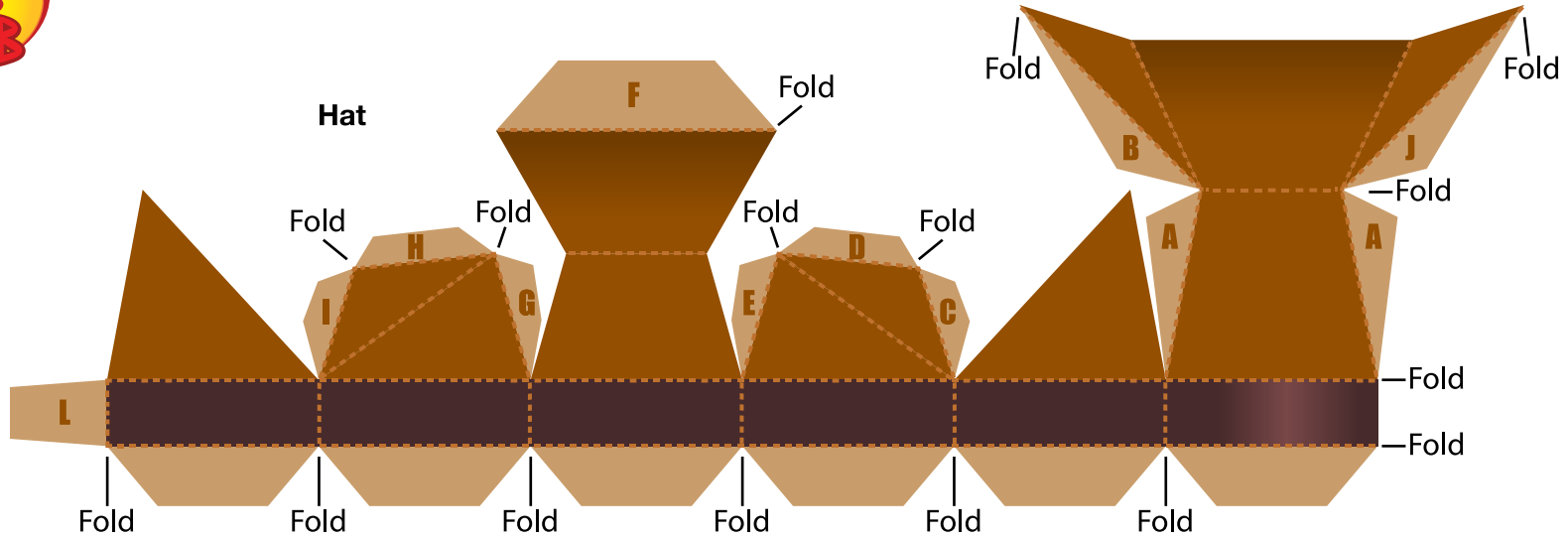


3D Agent P Papercraft





3D Agent P Papercraft





3D Agent P Papercraft

1. Print the template on regular paper or cardstock and cut out the pieces. Make all folds along dashed lines.
2. Using glue or double-sided tape, construct Agent P's body by securing all tabs to their corresponding pieces in alphabetical order. The body will be much easier to construct if you start with the tabs at the bottom.
3. Construct Agent P's legs by securing all orange tabs on the feet to their corresponding pieces, then work your way up each leg. When the legs are finished, use the remaining tabs to secure each leg to Agent P's body where indicated.
4. Construct the hat by securing all tabs to their corresponding pieces in alphabetical order. When the top of the hat is complete, slip it through the light brown side of the brim. Secure the bottom of the brim (darker side) to the top of the brim so the design is two-sided. The remaining tabs should be sandwiched between the top and bottom of the brim.
5. Fold Agent P's bill in half and secure it so the design is two-sided. Butterfly the tabs and use them to attach the bill to Agent P's face.
6. Fold Agent P's tail in half and secure it so the design is two-sided. Butterfly the tabs and use them to attach the tail to Agent P's lower back.
7. Fold Agent P's arms in half and secure them so the designs are two-sided. Butterfly the tabs and use them to attach the arms to Agent P's sides.

